

**Positions: East or West?
Public Survey Findings
(Comparative Data of Repeating Research)**

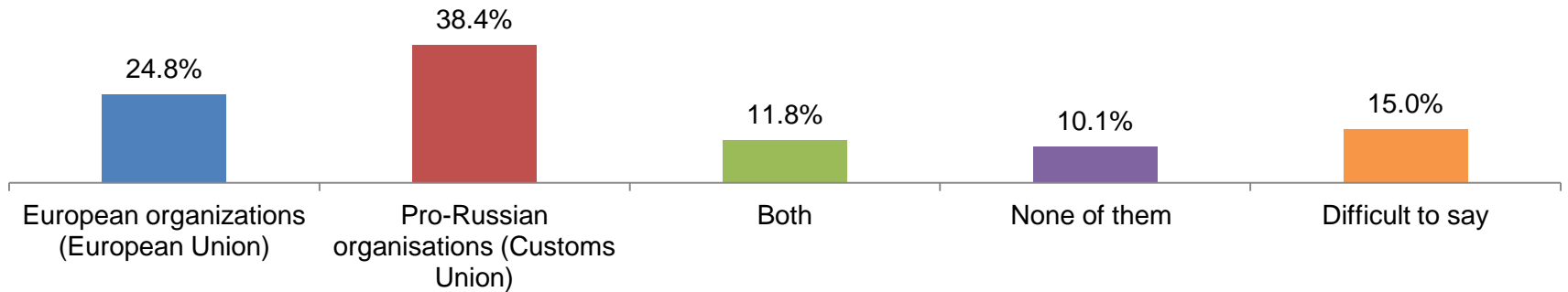
Methodology

	Research 1	Research 2
<u>Type of research</u>	Quantitative, sample survey	Quantitative, sample survey
<u>Method of research</u>	semi-structured questionnaires	semi-structured questionnaires
<u>Period of research</u>	August, 2014	August, 2015
<u>Volume of sampling</u>	1300 interviews	1200 interviews
<u>Sampling allocation in RA area</u>	Distributed in all RA marzes (including Yerevan) proportionally	Distributed in all RA marzes (including Yerevan) proportionally
<u>Kind of sampling</u>	A stratified cluster sampling based on the principle of random choice	A stratified cluster sampling based on the principle of random choice
<u>Reliability, Margin of error</u>	95% reliability, $\pm 2.78\%$ margin of error	95% reliability, $\pm 2.81\%$ margin of error
<u>Age of respondents</u>	18 and over	18 and over

Membership to International Organizations

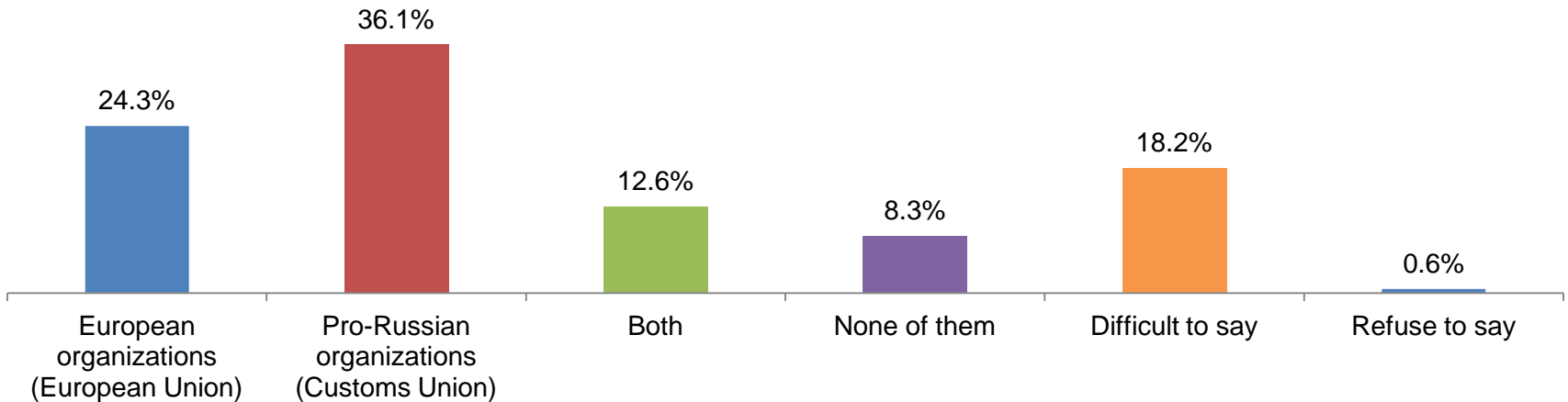
Respondents 1300, conducted in 2014

Armenia's desirable membership to international organizations



Respondents 1200, conducted in 2015

Armenia's desirable membership to international organizations

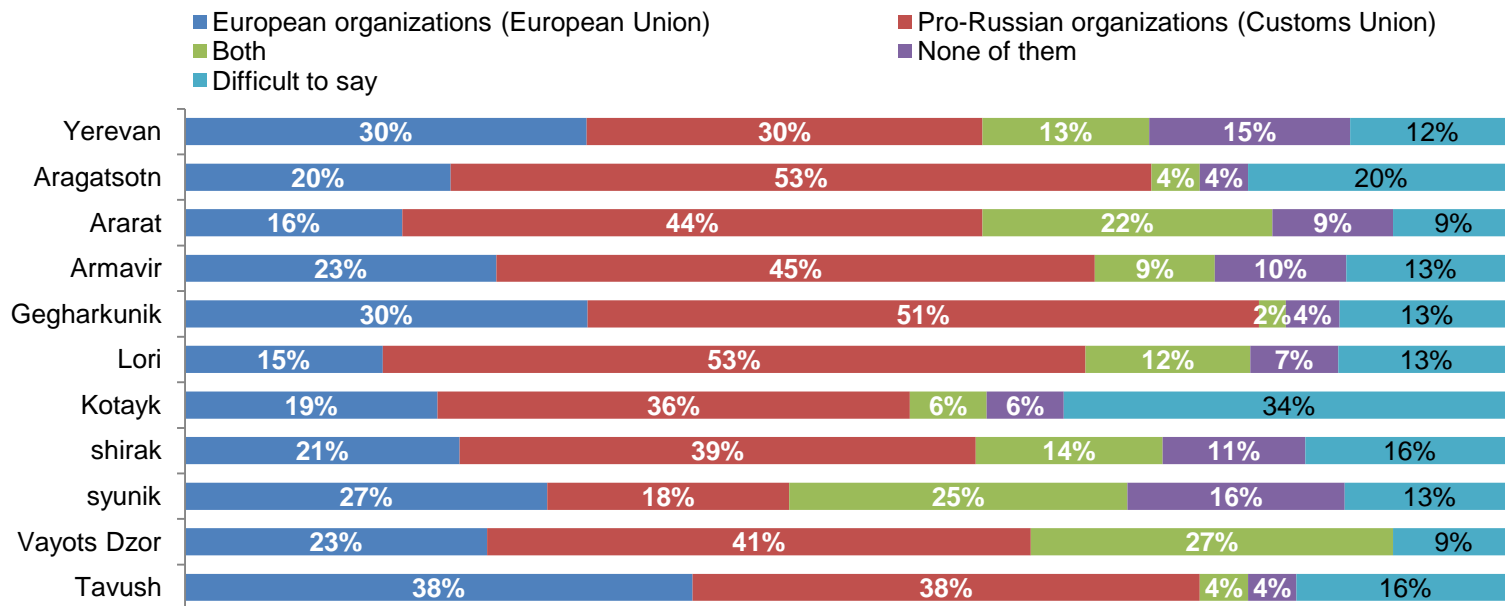


*Q86/Q26. . Do you think that Armenia should become a member of

Membership to international organizations according to marzes

430
55
110
111
99
121
121
121
55
22*
55

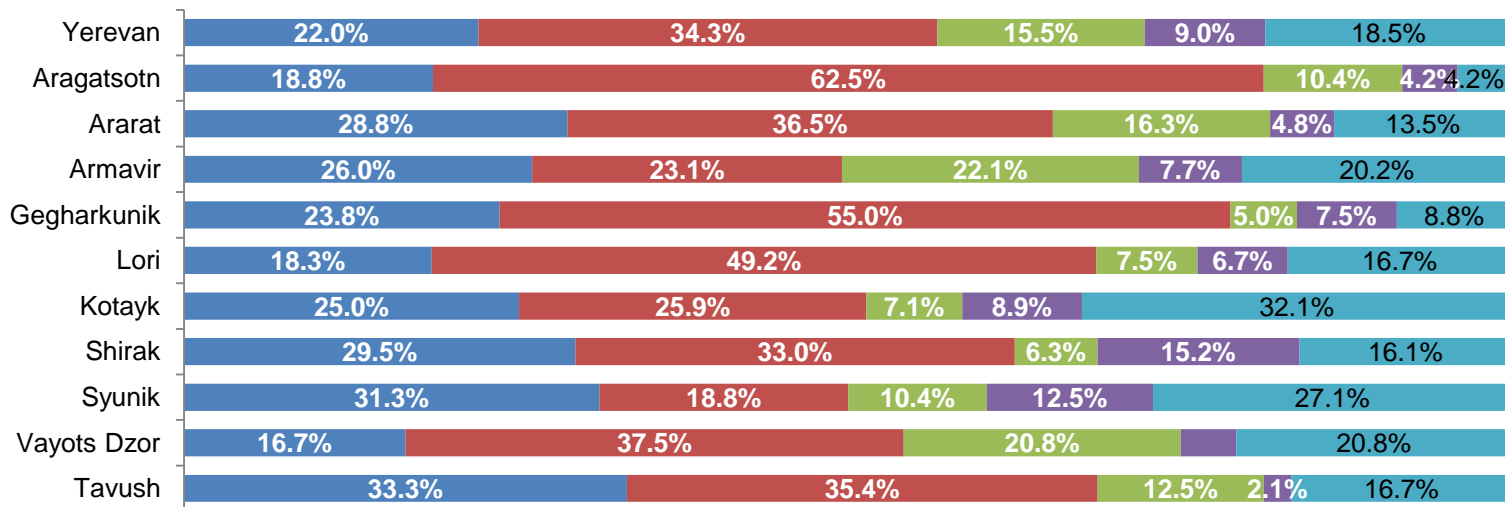
2014



400
48
104
104
80
120
112
112
48
24*
48

2015

■ European organizations (European Union) ■ Pro-Russian organizations (Customs Union) ■ Both ■ None of them ■ Difficult to say



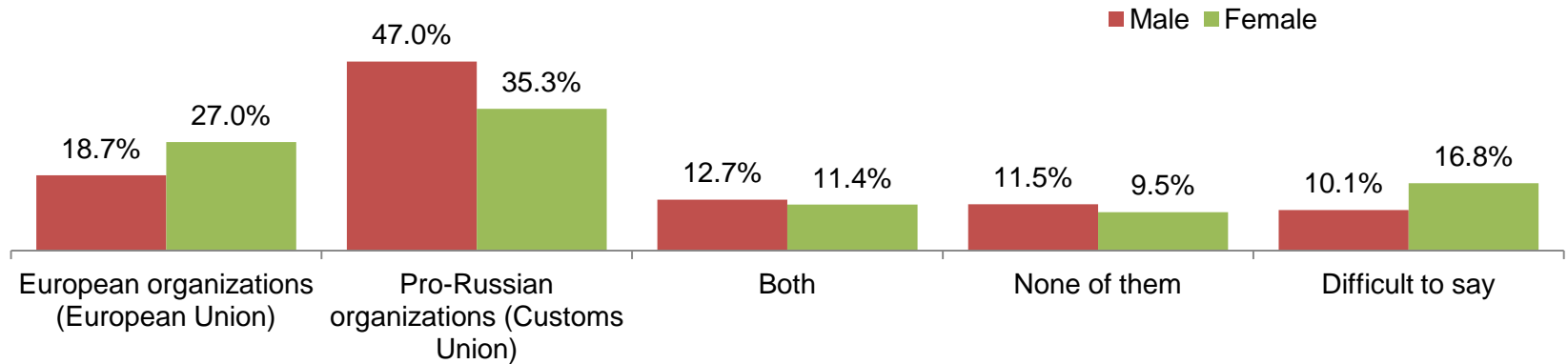
Q86. . Do you think that Armenia should become a member of...

* Statistically, unreliable

Membership to international organizations according to gender

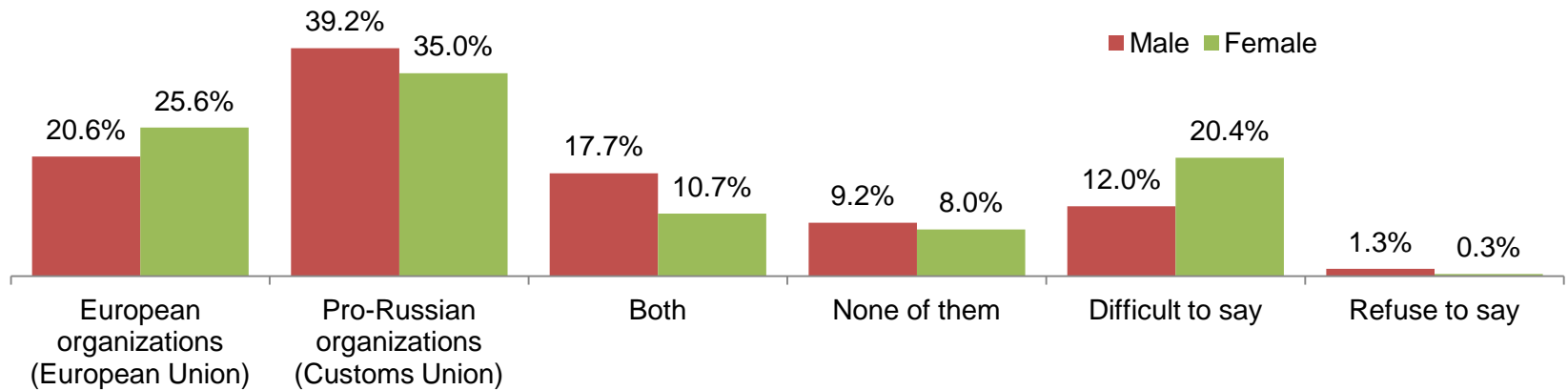
2014 Respondents Male 347

Female 953



2015 Respondents Male 316

Female 884



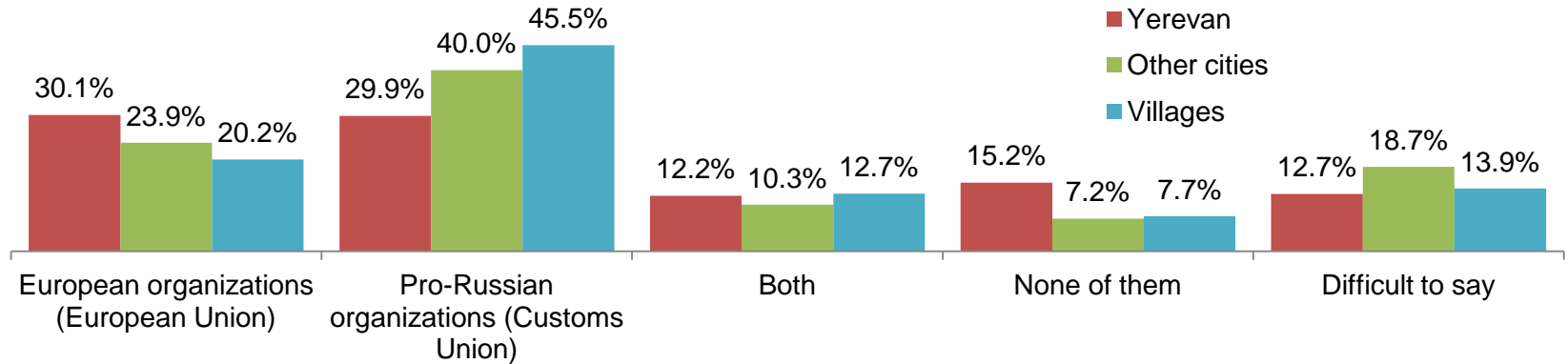
Q86. Do you think that Armenia should become a member of...

Membership to international organizations according to place of residence

2014 Residents of Yerevan 442

Other cities 418

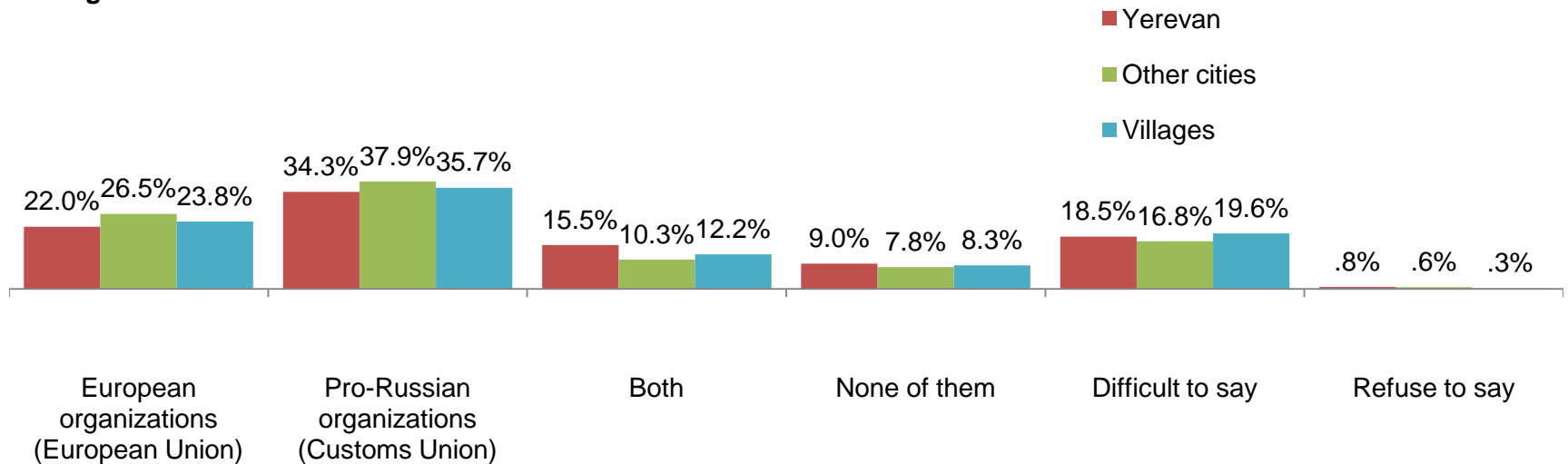
Villages 440



2015 Residents 400

Other cities 464

Villages 336

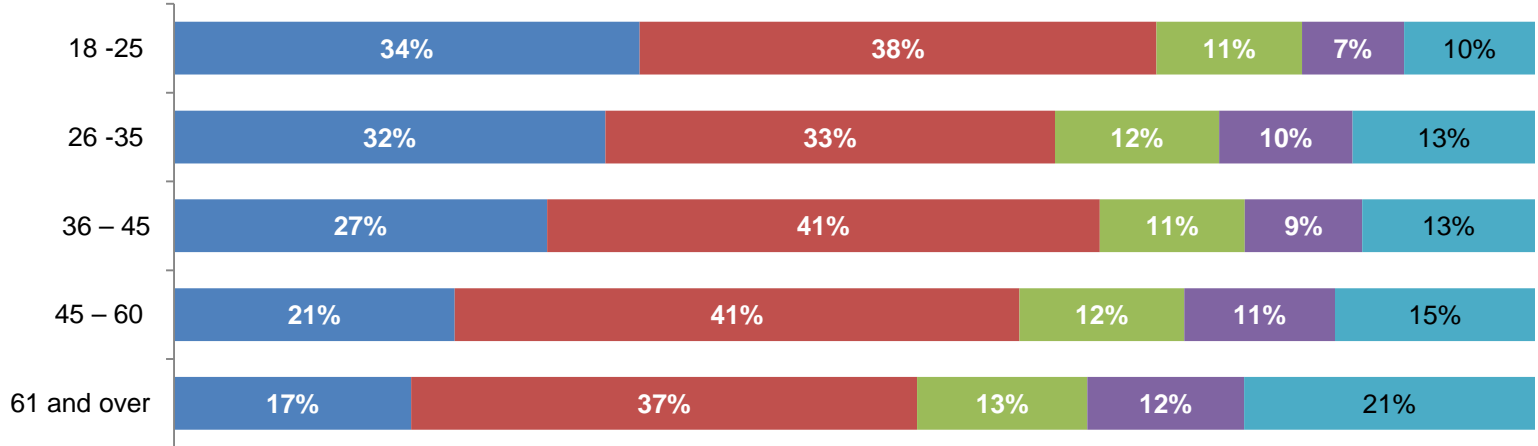


Membership to international organizations according respondents' age

2014

Respondents

■ European organizations (European Union) ■ Pro-Russian organizations (Customs Union) ■ Both ■ None of them ■ Difficult to say



187

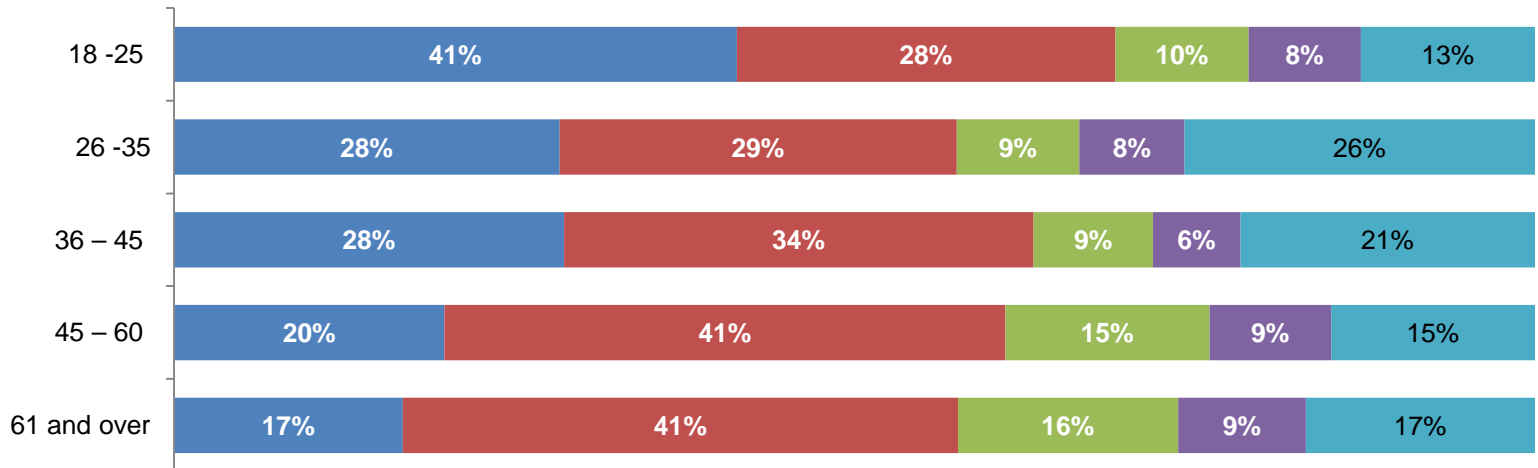
224

197

388

304

■ European organizations (European Union) ■ Pro-Russian organizations (Customs Union) ■ Both ■ None of them ■ Difficult to say



2015

Respondents

133

235

173

349

310

Q86. Do you think that Armenia should become a member of...

* Statistically, unreliable

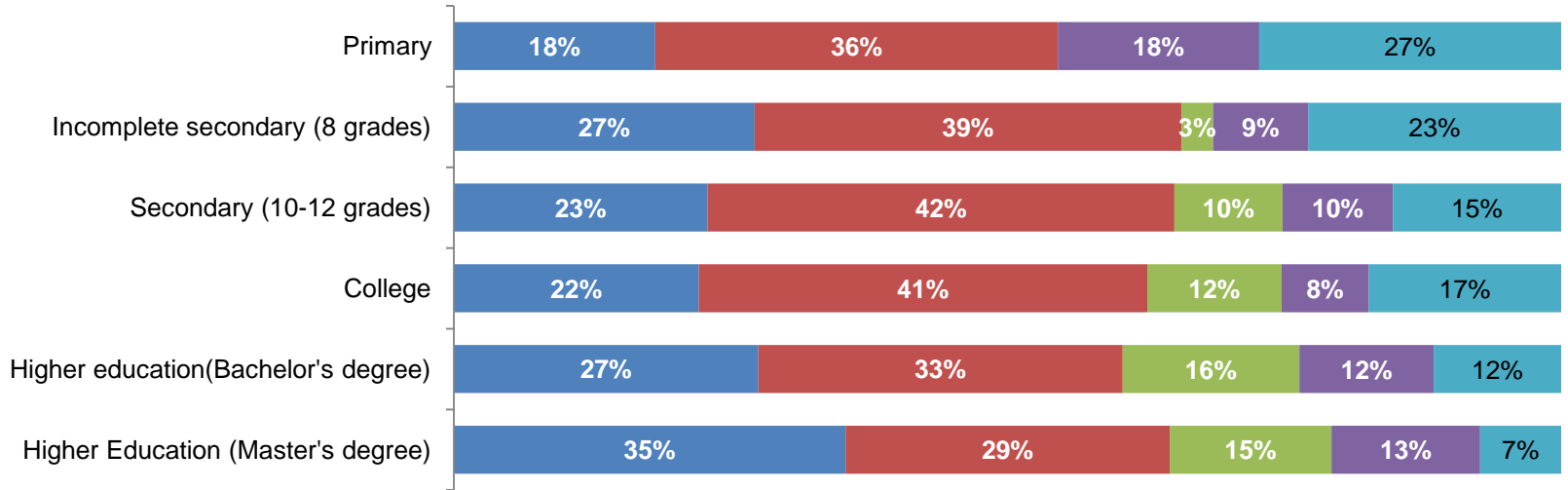
Membership to international organizations according to education

■ European organizations (European Union) ■ Pro-Russian organizations (Customs Union) ■ Both ■ Both2 ■ Difficult to say

2014

Residents

11*
70
441
380
313
82

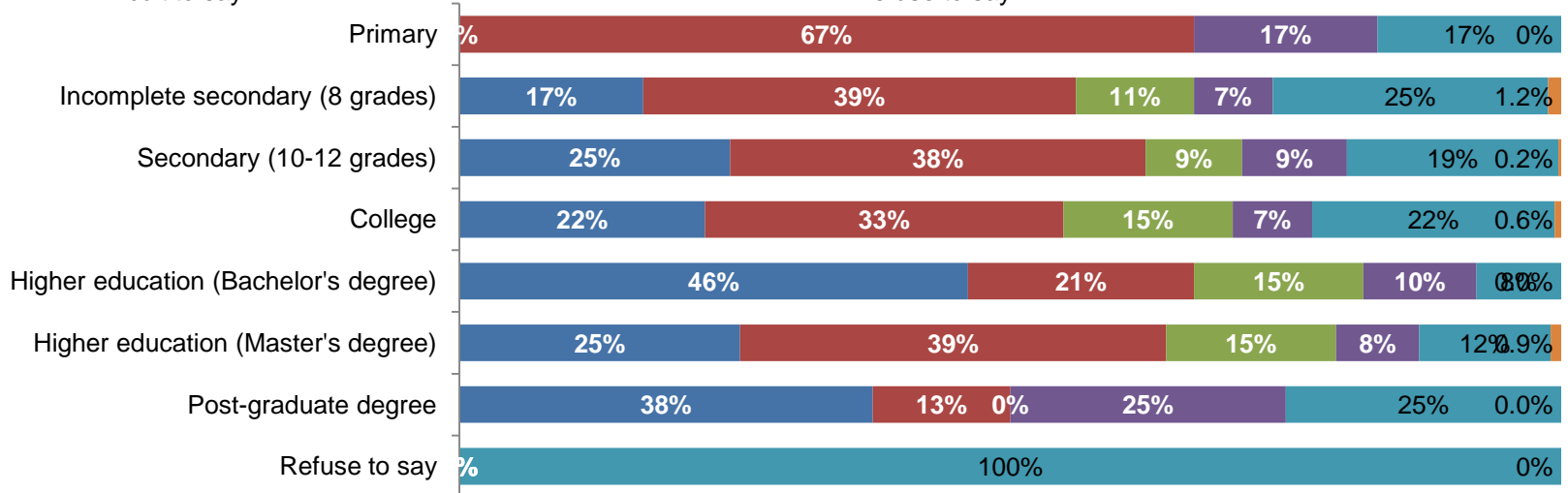


■ European organizations (European Union) ■ Pro-Russian organizations (Customs Union)
 ■ Both ■ None of them
 ■ Difficult to say ■ Refuse to say

2015

residents

6*
84
411
332
39
318*
8
1

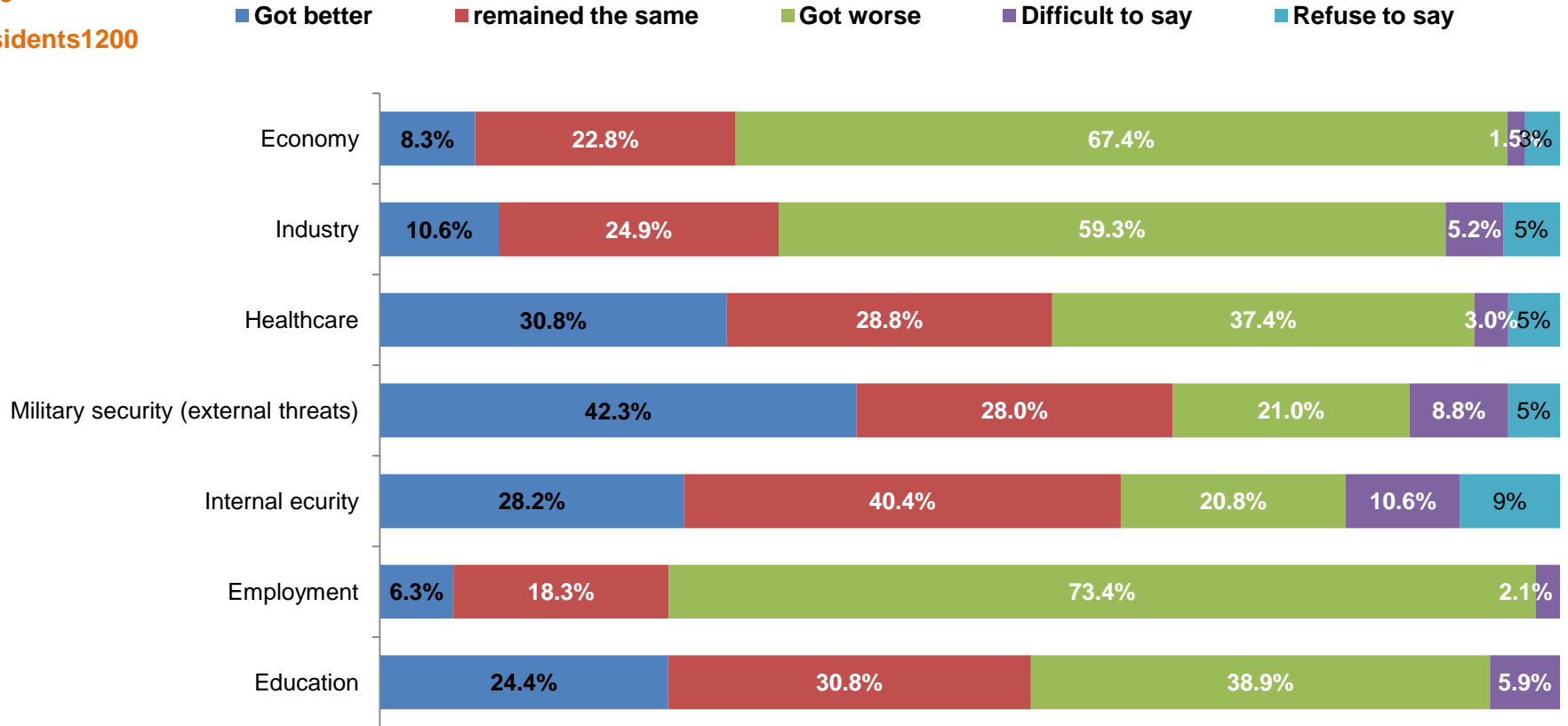


Q86. Do you think that Armenia should become a member of

*Statistically, unreliable

Change of situation in a number of fields in Armenia during the last year?

2015
Residents 1200



www.aprgroup.org

www.hcav.am

Q26 In your opinion how the situation has changed in Armenia during the last year.